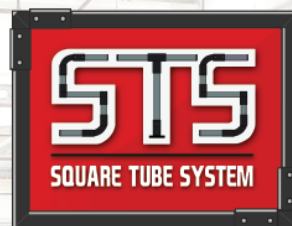
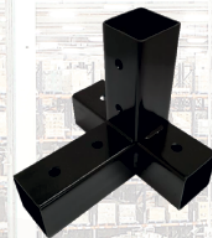




STS
SYSTEM



SAFETY INNOVATION COST REDUCTION



The **STS System** fills the need for increased durability and rigidity over pipe and connectors. This product offers the opportunity for a completely modular system to create custom structures. Enabling the integration of pipe and connector systems, Square Tube creates a structure with a durable, towable base and a light top end for easy maneuvering.

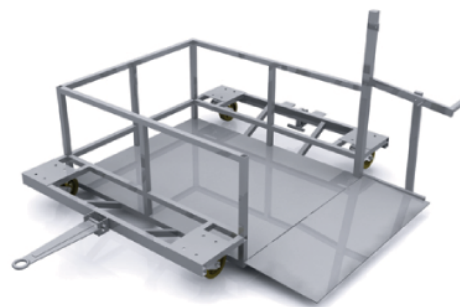


**NO
CHARGE
DESIGN
SERVICE!**

ASK
« ABOUT OUR

CONTINUOUS IMPROVEMENT

Durable system with the highest weight capacity



COMPLETELY MODULAR SYSTEM

STS SQUARE TUBE CUSTOM APPLICATIONS INCLUDE:

- Heavy Duty Push Carts
- Mother/Daughter Carts
- Heavy Duty Bases
- Rigid Stands and Center Posts
- Flow Racks
- Heavy Duty Work Surfaces



ABOUT C TEK LEAN SOLUTIONS, INC

For over 20 years, C Tek has provided lean material handling solutions across North America. With our high-quality materials and innovative design, we have worked across all industries to eliminate waste and drive efficient and safe environments for our customers.

WHY SELECT STS?

- Completely modular tube system for medium to heavy-duty applications
- Repurposable system to reduce production costs
- Configurable with pipe and connector systems to create a strong base with a light top end, easily maneuverable cart
- No welding required

